



Beaufort County Public Works Stormwater Infrastructure Project Summary

Project Summary: Folly Road Channel

Activity: Routine/Preventive Maintenance

Narrative Description of Project:

Duration: 2/29/16 - 12/7/16

Project improved 390 L.F. of drainage system. Grubbed and cleared 390 L.F. of workshelf. Cleaned out 390 L.F. of channel.
Installed (2) access pipes, (2) bleeder pipes, rip rap and hydroseeded for erosion control. Jetted (1) driveway pipe.

2015-001 / Folly Road Channel	Labor Hours	Labor Cost	Equipment Cost	Material Cost	Contractor Cost	Indirect Labor	Total Cost
APINS / Access pipe - installed	39.0	\$885.16	\$174.85	\$290.16	\$0.00	\$552.90	\$1,903.07
AUDIT / Audit Project	1.5	\$35.24	\$0.00	\$0.00	\$0.00	\$19.85	\$55.08
BPINST / Bleeder pipe - Installed	40.0	\$968.70	\$216.78	\$236.42	\$0.00	\$555.10	\$1,977.00
CCO / Channel - cleaned out	40.0	\$968.70	\$394.67	\$76.39	\$0.00	\$555.10	\$1,994.86
CGRB / Channel - grubbed	111.0	\$2,810.32	\$969.01	\$143.90	\$0.00	\$1,560.83	\$5,484.06
CPRP / Channel Pipe - Replaced	40.0	\$934.80	\$335.78	\$332.89	\$0.00	\$545.30	\$2,148.77
DEBREM / Debris Removal - Jobsite	30.0	\$731.50	\$231.32	\$28.65	\$0.00	\$453.50	\$1,444.97
DPJT / Driveway Pipe - Jetted	4.0	\$91.52	\$17.36	\$13.87	\$0.00	\$59.40	\$182.15
HAUL / Hauling	196.5	\$4,400.83	\$1,909.95	\$1,829.49	\$0.00	\$2,808.07	\$10,948.34
HYDR / Hydroseeding	10.0	\$230.10	\$80.20	\$90.13	\$0.00	\$149.55	\$549.98
LM / Loading Materials	38.0	\$923.30	\$448.24	\$30.56	\$0.00	\$581.40	\$1,983.50
ONJV / Onsite Job Visit	11.0	\$375.98	\$39.60	\$35.80	\$0.00	\$269.17	\$720.55
PL / Project Layout	2.0	\$91.20	\$7.24	\$3.58	\$0.00	\$67.92	\$169.94
PRRECON / Project Reconnaissance	10.0	\$222.85	\$17.70	\$10.74	\$0.00	\$133.15	\$384.44
RMTRW / Remove trees - Workshelf	80.0	\$1,940.00	\$798.91	\$171.28	\$0.00	\$1,112.30	\$4,022.49
WSGRB / Workshelf - Grubbed	90.0	\$2,121.50	\$622.19	\$196.73	\$0.00	\$1,336.70	\$4,277.12
2015-001 / Folly Road Channel	743.0	\$17,731.69	\$6,263.80	\$3,490.59	\$0.00	\$10,760.23	\$38,246.32
Sub Total							
Grand Total	743.0	\$17,731.69	\$6,263.80	\$3,490.59	\$0.00	\$10,760.23	\$38,246.32

Before



During



After





Project: Folly
Road Channel
Map #1

Activity: Routine/
Preventive
Maintenance

Project #:
2015-001

Township/SW Dist:
St. Helena Island/8

Completed:
December 2016

Legend

Drainage Type

- Access Pipe
- Bleeder Pipe
- Channel Pipe
- Channel
- Stream
- Crossline Pipe
- Driveway Pipe
- Lateral
- Lateral Pipe
- River
- Road Pipe
- Roadside
- Roadside Pipe

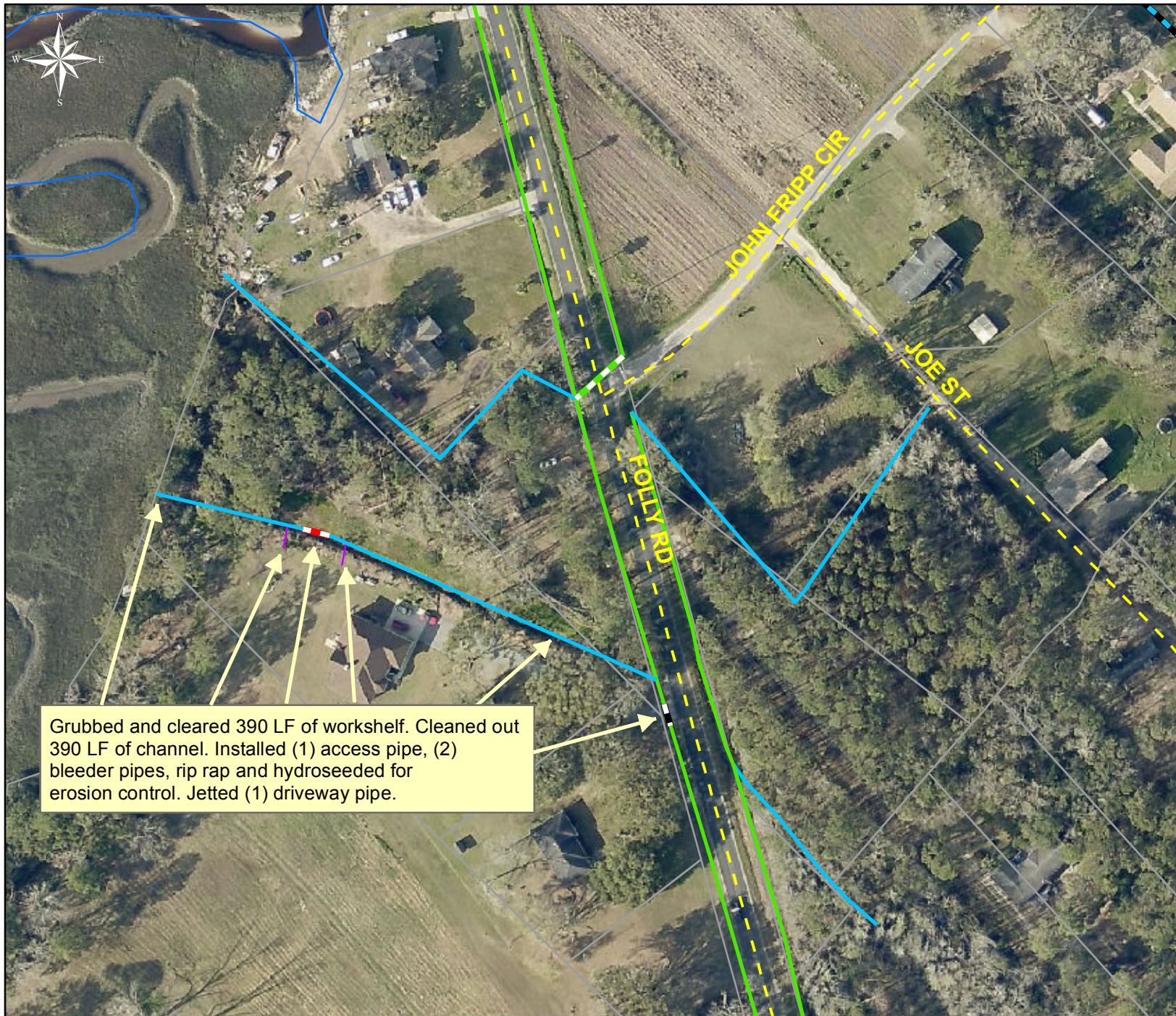
0 60 120 240 360 480
Feet

1 inch = 250 feet

Prepared By: BC Stormwater Management Utility

Date Print: 6/13/17

File: C:\project summaries map\Folly Road Channel Map #1_2015-001



Project: Folly Road Channel Map #2

Activity: Routine/ Preventive Maintenance

Project #: 2015-001

Township/SW Dist: St. Helena Island/8

Completed: December 2016

0 30 60 120 180 240 Feet

1 inch = 130 feet

Prepared By: BC Stormwater Management Utility
Date Print: 6/13/17

File: C:\project summaries map\Folly Road Channel Map#2_2015-001